



SPECIFICATION FEATURE:

WIDELY USED FOR INDOOR COMMERCIAL AND RESIDENTIAL LIGHTING PURPOSES

ELEGANT BRUSHED NICKEL FINISHING WITH A SLEEK LOW PROFILE DESIGN

COLOR CHOICE TEMPERATURE: TURNABLE 3000K, 4000K, 5000K

NO BRACKET NEEDED FOR SURFACE MOUNT

EDGE LIT DESIGNED FOR EVEN DISTRIBUTION OF LIGHT

REPLACES RECESSED OR SURFACE MOUNT FLORESCENT FIXTURES

AVAILABLE 0-10V DIMMING AND STEP DIMMING (100%, 50%, 10%)

**1X4
40W**

INPUT VOLTAGE	110 - 277 VAC
CRI	>80
LUMEN PER WATT	100 LM/W
AVAILABLE CCT	CCT TURNABLE 3000K, 4000K, 5000K
LIFE SPAN	50,000 HOURS
OPERATION TEMPERATURE	-2°F ~ 113°F
LUMEN	4000
MOUNTING OPTIONS	SURFACE MOUNT

ORDERING OPTIONS:

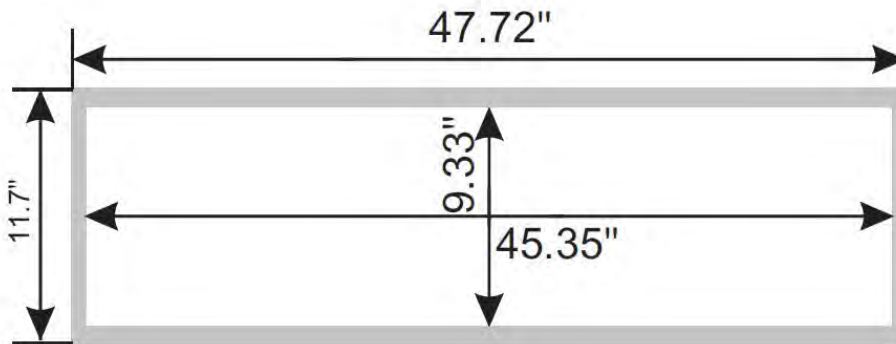
1X4

EXAMPLE: PL1X4 40W 3CT DIM

PL 1X4	40W	3CT	[BLANK]	DIM
SERIES PL1X4	RATED WATTAGE 40W 40 WATT	COLOR TEMP 3CT 3000K,4000K, 5000K	INPUT VOLTAGE BLANK 110 - 277 VAC	OPTIONS DIM DIMMABLE

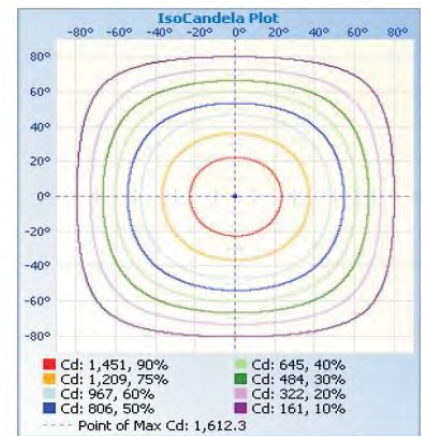
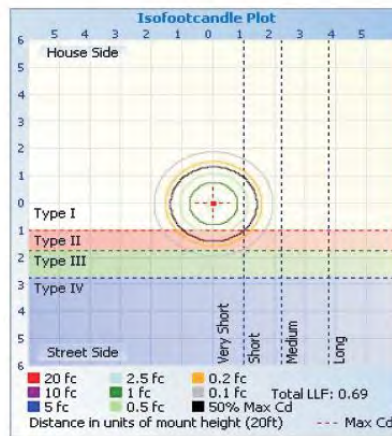
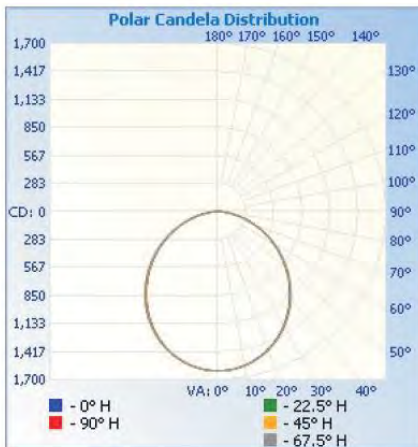
DIMENSIONS:

1X4



PHOTOMETRIC:

1X4



Illuminance at a Distance

Center Beam fc	Beam Width
5.58 fc	46.4 ft 47.5 ft
1.39 fc	92.9 ft 95.0 ft
0.62 fc	139.3 ft 142.4 ft
0.35 fc	185.7 ft 189.9 ft
0.22 fc	232.2 ft 237.4 ft
0.15 fc	278.6 ft 284.9 ft

■ Vert. Spread: 107.6°
■ Horiz. Spread: 108.8°

MOUNT OPTIONS:

RECESSED INSTALLATION

Step1: Remove the surface mounted kit from the luminaire.

Step2: Bend hang buckle by 90° making it vertical to the rear cover of panel light. Same to 4 hang buckles.(Figure 2)

Step3: Turn off power,remove the ceiling panel. Then place the panel in to the T-bar,ensure he panel is attached to the ceiling.(Figure3)

Step4:Remove appropriate round knock-out(s) and connect conduit to J-box with proper connector(s).

Step5:Put a connector to the end of AC input wire and tightly.the line connect to the connector with the black mark, the natural connect to another,the ground connect to the green wire.(Figure4)

For 0-10V Dimming

Compatible with 0-10V dimmer

The driver PUR (D+) to the dimmer+(PUR),and the driver GRY(D-)to the dimmer-(GRY)

Connect the wires with terminal cap as shown in wiring diagram (Figure 6).

Incoming insulated dimming conductors shall have voltage rated at least equal to the branch voltage.

For Step Dimming

please use switch to dim and don't need to connect the dimming wire. Dimming step: **Fristly**, Turn on to 100% brightness,

Secondly,It takes about 0.5~2 seconds from turn off the light to next trun on and lamp is in 50% brightness, **At last** ,It takes about 0.5~2 seconds from turn off the light to next trun on and lamp 10% brightness. (Figure 7)

Note: For cycle of step dimming, wait until the lamp is in brightness.

For failure of step dimming, turn off the lamp and turn on after 3 second.

Step7:Push all wires back into the junction box,Close J-BOX for cap (Figure 5).

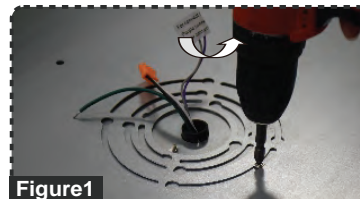


Figure1

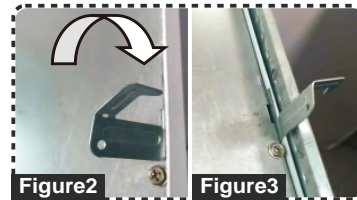


Figure2

Figure3

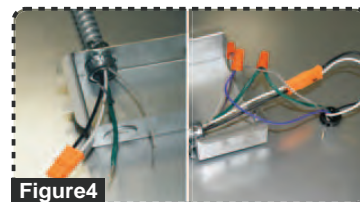


Figure4



Figure5

WIRING DIAGRAM

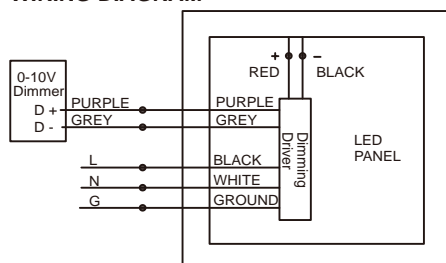
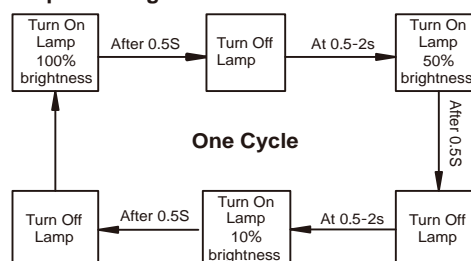


Figure6

Step Dimming



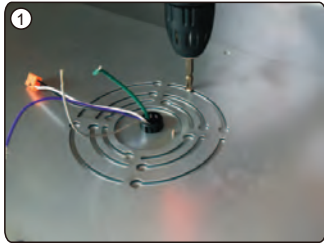
Note: After 3s turn on lamp to 100% brightness.

Figure7

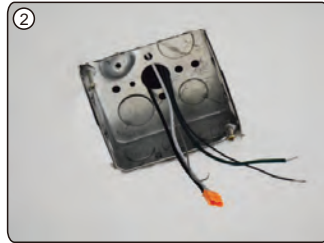
FS SERIES

Surface Mounted Kit Installation

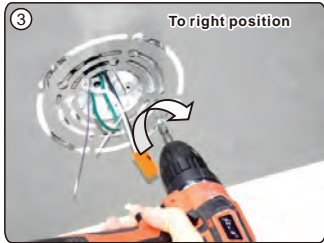
Step1: Remove the surface mounted kit from the luminaire.



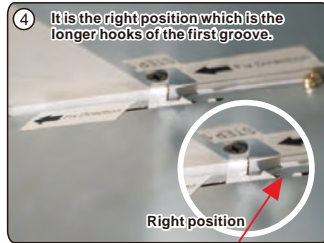
Step2: Turn off power. Insert the L,N wires of the J-box into the male connector.



Step3: Align the holes on the surface mounted kit with the hole on the J-box. Tighten 2#8-32 screws, rotate the plate to your right position and lots of KA3.5*20mm screws into the ceiling and make the kit flush with the ceiling.



Step4: Align the 2 longer hooks on the metal plate with the longer hole on the luminaire (Look at the metal plate and the luminaire with the 'STEP 1' mark). Slightly move the luminaire forward and make sure the hooks are in right position.



Step5: Fix the metal string on the hook. (Fig.2)



Step6: Plug the female connector of the luminaire into the male connector of the AC input wire. The Ground connects to Green wire. Dimming wires connect according to the same wire color.



FS SERIES

Surface Mounted Kit Installation

Step7: Put the wire into the J-box.



Step8: Push the luminaire on the ceiling. Make sure the 4 hooks are inside the luminaire and push forward the luminaire until you hear a clicking sound.



